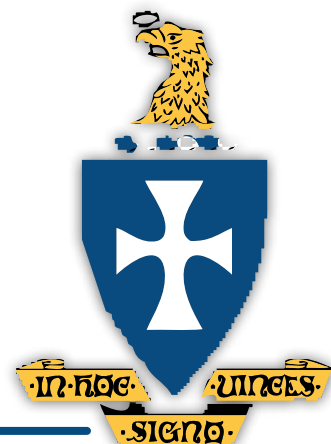


The Arizona Sig

www.UASigmaChi.org

Sigma Chi at the University of Arizona · Fall 2009



New House Dedication - October 2009

More than 100 Sigma Chi actives, pledges, alumni and parents attended Oct. 17's dedication of the new house that the president of the Beta Phi house corporation called a place where memories are made. They also heard about a new mentoring and career development program the alumni chapter plans to begin in January.

Brother Jim Campbell told the gathering on the UA's Family Weekend on the house patio that the building, which is being leased from the Kappa Sigs, signifies the past, the present and the future for generations of Sigma Chis. "We dedicate buildings because they signify our lives," he said. "It is the memories and the experiences that go with the building."

The Beta Phi actives and pledges moved into the house at 1423 E. First St. this fall under a lease for interim housing for three years while a campaign continues to raise funds to build a permanent facility.

The house sleeps 40 and has a resident adviser unit. It comes with a full kitchen and dining room, which will be used. It also has a living room, chapter room, and storage and utility rooms. It is a two- and three-story structure, with a sprinkler system for fire protection. It has multiple outdoor areas, including a half basketball court. It is considered one of the two nicest fraternity houses on campus.

Campbell told the gathering that the Beta Phi Chapter has been an important part of the university since its inception in 1921, calling the chapter a "driving force at the university. Throughout those decades, men who have worn the white cross including Sen. Barry Goldwater, 53rd Grand Consul Dr. Marvin "Swede" Johnson, 50th Grand Consul Jack McDuff and so many others have started their adult lives at this chapter," he said.

"This house is the gathering spot for our young brothers to learn and to grow into those standards and values that our alumni brothers have attempted to live their lives to these many years.



New ΣΧ House at 1423 E. 1st Street

However, the house is not the fraternity," Campbell noted. "Our young undergraduate members and their alumni brothers living their lives to a set of moral values and ideals are the fraternity. We charge our young members to conduct themselves and to live their lives to a higher standard ... journey that started in a loving home with their parents and siblings ... but a journey that continues here and in the years to come."

Chapter adviser Robin Winters thanked the parents and Brothers for their help in securing the house. "Parents, without you, all of this would be impossible," he said. "Brothers, without your tireless efforts, none of this would be possible."

In describing the mentoring program, Brother Terry Valeski told the gathering that alumni would be advising Beta Phi juniors and seniors on career paths. He quoted Winston Churchill, who said, "We make a living by what we get. We make a life by what we give."

Jim Johnson '61

Beta Phi Alumni Director of Communications

Alumni Chapter Executive Committee

President

Steve Schuyler '79
sschuyler@partnersmanagement.com
520.745.6221

Co-Executive Vice President

Terry Valeski '68
t.valeski@aircom.co.uk
520.615.4095

Co-Executive Vice President

Lisle Payne '64
paynelw@pacbell.net
415.981.2810

Vice President of Finance

Tom Scott '78
tescott425@comcast.com
520.297.1258

Vice President of Communications

Jim Johnson '61
jwjtcuson@comcast.net
520.888.9345

Vice President of Membership

Chuck Colton '69
wacolton@comcast.net
520.395.2628

Undergraduate Chapter Advisor

Robin Winters '89
cwinters@farmersagent.com
520.571.1041

Sigma Chi Building Company Pres.

Jim Campbell '88
jcampbell@macbanlaw.com
520.624.6446

Members:

Linn Wallace '60
Jon Underwood '64
Tom Furrier '83
Winston Maddox '71
Randy Lewis '68
Larry Hecker '72

Consul Report - Andrew Cole

The fall semester has been one of tremendous growth here at the Beta Phi chapter. Thanks to the vast amount of support and effort by our alumni, we have moved into our new home of the next three years and now have the ultimate platform from which to propel us forward. Already, we have begun to reap in the benefits of having a home beginning with our most successful rush to date.



Our pledge class of 32 fine men was the final result of nearly 1000 rushees and tireless work by our Rush Chairs, Michael Colletti and Dan Gibson. Undoubtedly the most diverse and well-rounded group on campus, the bonds created between these young men, ranging from National Merit Scholars to star athletes, has truly been astounding. This is of course due in large part to our Magister, John Komadina, who has significantly revamped our pledge education program to be one of the strongest in the Fraternity. Currently, the program is being distributed nationally to various chapters at the request of our Grand Officers. We look forward to the initiation of these much deserving men at our house in just a few short weeks on November 21st.

Scholastically, we continue to excel. Our house grade point average is the highest on campus for any fraternity with over five members at a respectable 3.03. Our members are involved in every honorary on campus including the extremely selective Chain Gang Junior honorary and Bobcats Senior honorary. Beta Phi has a significant presence in the student government including ASUA Senator, Daniel Wallace and Deputy Elections Commissioner, Michael Colletti. Finally, Dane Denby is the President of Arizona Ambassadors.

We have been involved in several philanthropies including running a benefit concert for the Make-a-Wish Foundation with our neighbors, Chi Omega. Currently, we participate in a minimum of 2 philanthropy and/or charitable events each month. Next Spring, Beta Phi will resurrect Derby Days commencing with a golf tournament at Arizona National on April 10th. All proceeds will benefit the Diamond Children's Medical Center with whom we have partnered to run our events for the week.

On behalf of the Beta Phi chapter, I would like to formally thank each and every involved alumnus for their devotion and contributions to our chapter. Our university relations, chapter stability, risk management, and community involvement are each at an all time high. Alumni involvement has proved fundamental to our progress thus far and continued involvement will be crucial for this chapter to reach its full potential and operate in a sustainable, healthy fashion.

In Hoc Signo Vincas,

A handwritten signature in black ink, appearing to read "Andrew Cole". The signature is fluid and cursive, with a large initial "A" and a stylized "C".

Fall 2009 Rush Report

The Epsilon pledge class of Beta Phi was pinned on Wednesday, September 9th 2009 at the Sigma Chi house. It was the culmination of the fall rush week, beginning August 31st and ending with bid day, September 5th. Preference dinner was at Gentle Ben's on September 4th, with many Beta Phi alumni showing up to voice their support. Thank you to all those alumni who helped out over the summer and during the week. Approximately nine hundred and sixty men came through our doors, including thirty-four legacies.

All in all, thirty-four individuals compose the most diverse pledge class, well-balanced and high minded gentleman Beta Phi has ever seen and we have no doubt they will make us all proud. Their different backgrounds, races, cultures, ages and origins all reflect their different temperaments, talents, and convictions that unite them together in the common bonds of friendship, justice and learning. Hailing from Canada to Mexico and everywhere in between, they are involved in everything from Ice Cats to Freshman Class Council. Their first pledge meeting was on September 13th, and will continue to be every Sunday at 7PM at the Sigma Chi house.

Zack Nicolazzo, Director of Fraternity & Sorority Programs, had this to say about our rush "Competing with big house fraternities who have been on campus for many years such as SAE, FIJI and D-Chi is a testament to your brothers and the hard work you put into the week". Michael Colletti and Dan Gibson worked effortlessly all summer to breakdown the



nuts and bolts of recruitment and create a new and improved system of rush for Beta Phi. They will now pass the torch off to John Komadina, Magister, who will be the architect behind their 8 week pledge program and their journey to becoming outstanding Sigma Chi Brothers. Our goal is a 100% retention rate to ensure every man pledged becomes a Sigma Chi brother. Mission 365 Recruitment is ongoing and we have compiled a list of gentleman we would like to stay in touch with and pledge next semester. One of the most important things we have to do as a Sigma Chi is pass our order on, and ensure its success for the future. The men left standing are the cream of the crop, the last ones standing. This was the first step in a lifelong process and we are charged with finding those men that have the unique qualities that will last over time and advance our order. These men will make Beta Phi proud.

Sigma Chi Tucson Alumni Chapter

Former UA baseball coach Jerry Kindall told members of the Sigma Chi Alumni Chapter on Sept. 10 that he was impressed with the principles of the fraternity and that was confident the Beta Phi Chapter's dignity would be re-established on campus.

"I know about the chapter's troubles," he said, "but it has recovered in a wonderful way."

Kindall met with the 25 alumni and Beta Phi undergraduates at their monthly meeting at Sam Hughes Place near the UA campus.

Kindall was head baseball coach at Arizona from 1973 to 1996 and won three NCAA championships. He won 860 games, lost 580 and tied six. His players garnered All-America recognition 34 times, first team all-Pac-10 South honors 44 times and all-WAC honors 27 times during his tenure at Arizona. Three of his players were named the College World Series MVP and four were tabbed as the Pac-10 South Player of the Year.

A total of 209 players who played for Coach Kindall at Arizona signed contracts to play professional baseball, including 32

who went on to play at the major league level. He spent eight seasons in the major leagues with the Cubs, Cleveland Indians and Minnesota Twins.

He recalled how when he attended the University of Minnesota that he was too busy with playing baseball and basketball to have time for a fraternity, something that he regretted. He also recalled his fondness for Sigma Chis he knew while he was on campus, including Swede Johnson, Frank Sancet, Jerry Tolle, Bob Svob, Dana Cooper, Terry Valeski and others.

"I am impressed with Sigma Chi," he said, particularly with the "high standards" of the Jordan Standard.

Kindall entertained the group with baseball stories that were triggered by a 10-question quiz featuring memorable dates and statistics in baseball history. They included the first night game in Major League Baseball, the "shot heard round the world," Pete Rose's recording-setting base hits and Roger Maris' 61-home run season.



Campaign Update

As many of you have already known, we were successful in negotiating a favorable short term fraternity house lease with the Kappa Sig's that was officially approved by the University of Arizona this past summer. Beta Phi Alumni Jim Campbell and Steve Schuyler successfully coordinated these difficult activities and are owed a great debt of gratitude by all of us.



Many thanks to everyone that responded to Alumni President Steve Schuyler's request for funds to help complete the furnishing/conversion of the Kappa Sig house - the Sigma Chi Greek letters (see picture on page 1) are now in place on the front of the house. Moreover, rugs and blinds have been replaced, new painting has occurred and trophy cases as well as other chapter memorabilia occupy the appropriate space. Approximately \$16,000 of new funds were funded by Beta Phi donors for this purpose.

The current plan is to occupy the Kappa Sig house over the next several years and to successfully complete the new house capital campaign during this time period. We are now in the process of completing the extension of our building site land lease from the University and updating our architectural plans for the new Beta Phi house. Many thanks to Nyal Leslie and the members of the real estate committee for their special efforts in helping with these activities. At this juncture, we are planning to successfully complete the capital campaign during the next two years and be in a position to initiate construction of our new house in 2012.

Although we are pleased to report increasing donor support, the pace and the amount of funding during the second quarter has been impacted by the challenging economic environment. As a result of these conditions we have chosen to focus our campaign efforts on the latter half of the year and anticipate that the current campaign phase will accelerate this fall and be completed following our November 5-7 Homecoming Celebration weekend. Our objective is to increase our donor base by 50% during this time period and to make significant progress (our current total consists of \$1,400,000 of cash and pledges) towards achieving our \$2,000,000 interim goal.

In the past couple months, we have initiated a special Beta Phi Consul and Pro Consul communications program that will be focused on "recruiting" the past leaders of the Beta Phi Chapter to take a more active role in the current building capital campaign. Many thanks to Joe Beers, Herb Borovansky, Leo Corbet, Bill Gibney, Joe Markling, Mickey Powers, Ed Reading, John Shultz and Steve Schuyler for their personal leadership roles in these efforts.

Our Tucson Alumni Chapter continues to make significant progress. An Officer Group headed by President Steve Schuyler and an active Executive Committee have established a vital 2009 Alumni Program that will entail critical undergraduate activities and a special social/educational resource program that is currently being coordinated by Linn Wallace for the members. An undergraduate mentoring activity and a career education program for Beta Phi Juniors and Seniors is being organized by Alumni Terry Valeski was recently initiated following the annual Parents Weekend activity this past October.

Many thanks for your Beta Phi Building Capital Campaign donation.

In Hoc,

Joe Beers, Bob Bretz, Jim Corbet, Leo Corbet, Dave Knott, Bill Gibney, Mike Murphy, Randy Leathers, Joe Long, Paul Muscenti, Lisle Payne, Mickey Powers, Steve Schuyler, John Shultz, Frank White, Jon Underwood

Campaign Donors

Rob Adams '91	Bob Ellis '84	Joe Markling '80	Peter Roepke '62
Mike Anderson '63	Fred Emich '75	Daniel Mason '58	Greg Ross '91
Tim Arendt '86	James Fiduccia '95	Robert Maxwell '67	Jeffrey Schapira '85
Tom Arendt '79	Jim Flanagan '66	Jack McDuff '51	Bill Scott '80
Mike Barber '66	Chandler Flickinger '49	Pat McGinley '85	Steve Schuyler '79
Joe Beers '83	Rick Fried '63	Steve McNamee '64	Steve Seiler '63
James Benedict '04	Barry Gabel '84	Robert McWard '67	John Shultz '64
Ron Bergamo '65	Robert Garmon '69	Mike McWilliams '73	Jeff Sippel '85
David Bina '82	Jeffrey Garner '67	Wes Mohr '69	Daniel Skelton '64
Dick Bohnet '63	Paul Gehlsen '90	Jerome Moiso '63	Doug Tilford '89
Herb Borovansky '93	Bill Gibney '69	Carter Morgan '89	David Tinkelman '83
Bob Bretz '67	Bill Hall '63	Peter Moser '92	Ryan Toftoy '96
Steven Bried '84	Dennis Harman '62	Mike Murphy '67	Jon Underwood '64
Ted Brookhart '63	Don Harris '60	Paul Muscenti '58	Stephen Valentine '68
Brad Butler '90	Hank Harrison '56	James Musgrove '62	Terry Valeski '68
Earl Carroll '51	Larry Hecker '72	Mike Myers '88	Bob VanValer '72
Todd Cefaratti '85	Chuck Hunter '65	Bob Nairn '68	Donald Wade '64
Bill Chavira '92	Jay Kee Jacobson '65	Pete Newcomer '68	Jon Walker '63
Andrew Cole	Jim Johnson '61	James Nickel '66	Linn Wallace '60
Chuck Colton '69	John Keeler '71	Lee Nigro '67	Bill Wamsley '68
Jim Corbet '61	Burt Kinerk '57	John Norton '50	Kenneth Wayne '63
Leo Corbet '59	Jason Kirby '95	Lisle Payne '64	Charlie Webb '66
Jim Cote '68	David Knott '65	Dick Pesqueira '59	Carl Weiler '55
Jeff Cramer '96	James Kuykendall '96	Mickey Powers '64	Dave West '93
Bob Custer '75	Bill Kyte '65	Earl Powles '51	Frank White '62
Brad Day '70	Randy Leathers '67	Walter Pratt '93	Mic Williams '67
Brent Dover '88	John LeProvost '63	Ed Reading '84	Briggs Wood '62
David Drew '66	Nyal Leslie '68	Jack Redhair '58	
Zachary Drew '00	Joe Long '64	Neil Reithinger '92	
Ed Eisele '61	Lance Long '63	James Roberts '62	

For the online pledge form, visit www.UASigmaChi.org and/or contact Tony Marks at 800-228-7326 or by email at tony.marksch@fmgutucson.com.



Robin Winters '89 - Chapter Advisor

Letter to Parents



*Ed Reading, Jon Underwood, Terry Valeski, Jim Johnson, Jim Campbell,
Robin Winters and Steve Schuyler*

I am Robin Winters and the Chapter Advisor of the Beta Phi Chapter, Sigma Chi Fraternity at the University of Arizona. There is no doubt parents are concerned about the people with whom their son associates throughout his life. In college, when their son is “on his own,” many times for the first time, fathers and mothers are apprehensive of “letting go.” This is a crucial time in any young man's life and with so many choices that will present themselves during their college experience, we as parents hope that our children will know right from wrong. The Sigma Chi Fraternity is based on core values that help shape our young men into leaders on campus and give them the tools that they need to carry with them after graduation.

“We do hereby form ourselves into an association for the development of the nobler powers of the mind, the finer feelings of the heart, and for the promotion of friendship and congeniality of feeling.”

—The Founders of Sigma Chi

Preamble to the Constitution of 1856

The fundamental purpose of the Sigma Chi Fraternity is the cultivation, maintenance, and promotion of the core values of friendship, justice, and learning. In the pursuit of these high ideals, the Sigma Chi Fraternity is able to offer tremendous value in augmenting the collegiate experience and supporting the life journey of each of our members. We hope to assist brothers to become men of character, caring husbands, compassionate fathers, and community leaders.

Ever hear that line from a parent or counselor that college is the place where you make friendships that will last a lifetime?

Well, we believe that is true. Friendships are a crucial component of the collegiate experience. Sigma Chi brings together individuals from diverse backgrounds to assist one another in the attainment of high-minded goals—a friendship of a higher order that we call brotherhood.

Sigma Chi offers a host of social life rewards, but it does so in the context of good character. Integrity, sound judgment, and loyalty are all lofty goals that sometimes find themselves contradictory to the impulses of collegiate life. Sigma Chi provides a continuum of character development that assists young men to develop the qualities of their character.

Sigma Chi is an avenue for collegiate men to develop an appreciation of lifelong learning in order to gain knowledge, wisdom, and character. This pursuit by our members has brought about a betterment of the individual, campus, and community. Sigma Chi proudly rewards these brothers through scholarships and grants. Due to the generosity of the Sigma Chi Foundation, nearly \$2.5 million is awarded annually to worthy brothers.

Sigma Chi is proud to boast it has the most committed alumni members in the Greek-letter world. Alumni throughout North America and the world demonstrate their commitment to Sigma Chi by volunteering their time to enhance the experience of undergraduate brothers. Alumni volunteers provide housing, advise chapter officers, and serve as personal and professional mentors.

It is my hope that my son will pledge my Fraternity in the future. As a parent, I have jealously guarded his well-being and I could not want for better protection, a better learning environment, and leadership-training while away from home. We as Alumni look at each one of your son's as our own while in our care; it is our duty to mentor, coach and protect them as Sigma Chi brothers.

2009 Beta Phi Hall of Honor Class

Charles Bennett Christy 1898 (Chapter Eternal)

(FATHER OF THE BETA PHI CHAPTER)

William "Bill" Gibney '69

R. Patrick "Pat" McGinley '85

(accepting from 2008)

Richard "Dick" Pesqueira '59

Terrance "Terry" Valeski '68

Linn Wallace '60

(Visit UASigmaChi.org to view full bios of the 2009 inductees)



Charles Bennett Christy 1898 Father of the Beta Phi Chapter

Born in Iowa in 1873, Brother Charles Bennett Christy was brought to Arizona Territory by his family, who settled in Phoenix in 1883.

Finishing his primary and secondary education in Phoenix, Brother Christy enrolled in the University of Southern California, where he was initiated into Sigma Chi at Alpha Upsilon Chapter. He left Southern California in his senior year for Spanish-American War service. Following army service, Brother Christy studied opera in New York City, where he would meet his future wife Ethel.

Returning to Phoenix, he pursued a business career in banking, accounting and then as commercial secretary of local and state organizations. He also served as a life underwriter for the Equitable Life Assurance Society.

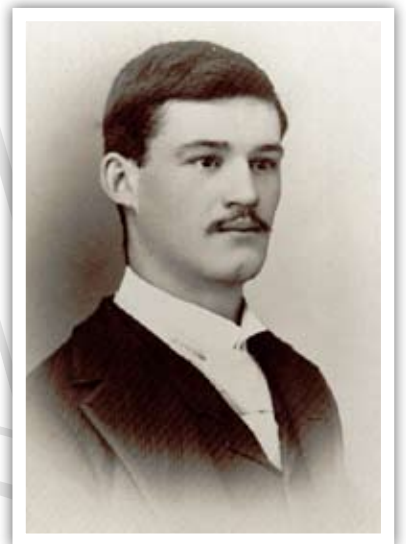
Brother Christy was very active in Rotary International. He served as president of the Phoenix Rotary Club, personally organized and installed seven new clubs in the state, and was named the first Governor of the Eighth District of Rotary.

Brother Christy's devotion and service to Sigma Chi started early, with his involvement in chapter offices at Alpha Upsilon, and continued as one of the charter members of the Phoenix Sigma Chi Alumni Chapter when it was founded in 1906. He served as chapter president almost continuously from its founding until his death.

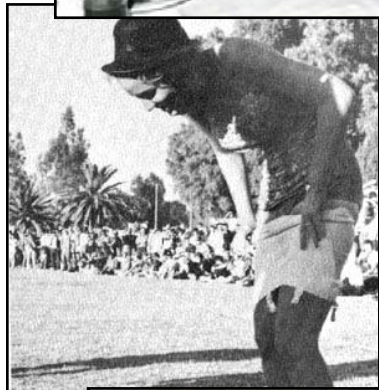
The establishment of an active Sigma Chi Chapter on the University of Arizona campus was one of the major goals of Brother Christy's life. From the selection and petitioning of a very worthy local fraternity in 1919, to the chartering and installation of Beta Phi Chapter on April 23 and 24, 1921, no one devoted more work, time or travel than he to bringing the White Cross to the University of Arizona campus.

Brother Christy died unexpectedly and entered Chapter Eternal at the age of 51 in Phoenix on December 21, 1924, leaving a wife and four children. One of ten Sigma Chis in his family, Charles Bennett Christy loved Sigma Chi, he loved the Beta Phi Chapter and he lived the Sigma Chi Ritual.

Please visit UASigmaChi.org for Newly Discovered History of Beta Phi Founding in 1921 provided by Marshall Christy '71



Memories of the Past



Please send Beta Phi updates and photos to 2660 N. 1st Ave. Tucson, AZ 85719